

# SAVIO

## Pond Free<sup>®</sup> Waterfall Well



(pump not included)

07-SV-105

Read entire instructions prior to assembly and operation.

**OPERATING MANUAL**

**WW1000**

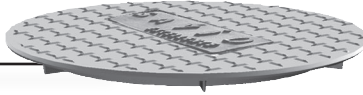
# Operating Capacities

The Pond Free® Waterfall Well simplifies construction of dramatic vanishing waterfalls and endless streams™. Patent pending design protects your valuable pump equipment from the forces of rock and water with a structurally tough injection-molded housing. Recommended for pump flows up to 15,000 gph.

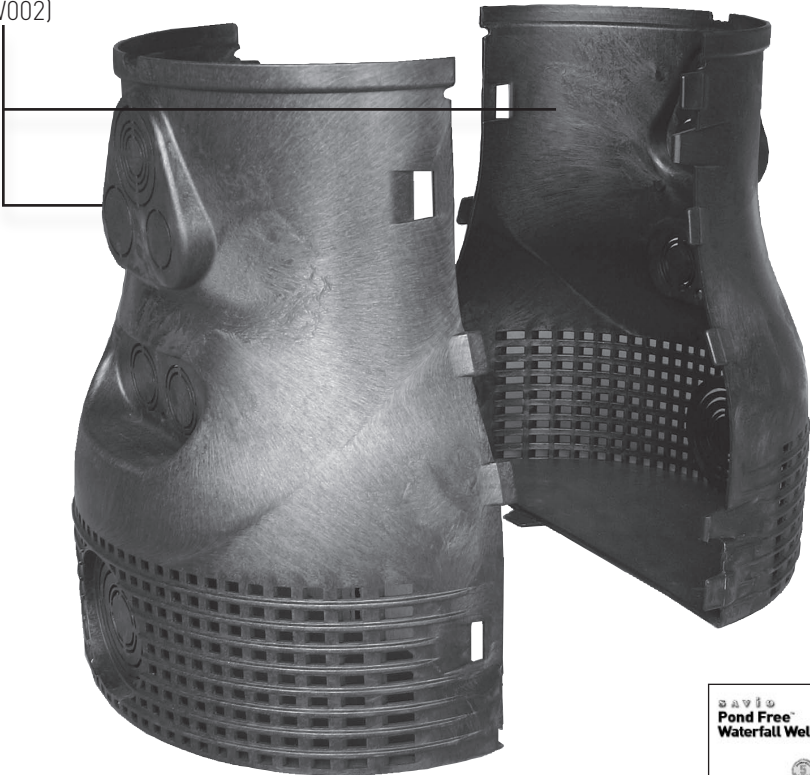
## COMPONENTS

waterfall well housing x2 • waterfall well lid

waterfall well lid  
(RW001)



waterfall well housing x 2  
(RW002)



**WW1000**

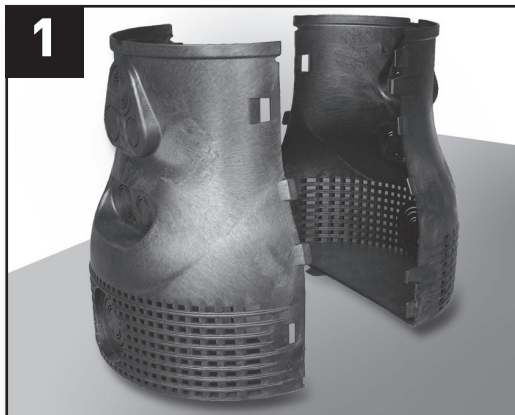


warranty card



operating manual

# Assembly and Installation



A) Remove Waterfall Well from the box.

B) Place the Waterfall Well on a flat surface with the open sides facing each other.

A) Place the two open sides close together with the locking tabs aligned.

B) Press locking tab and insert into slot.

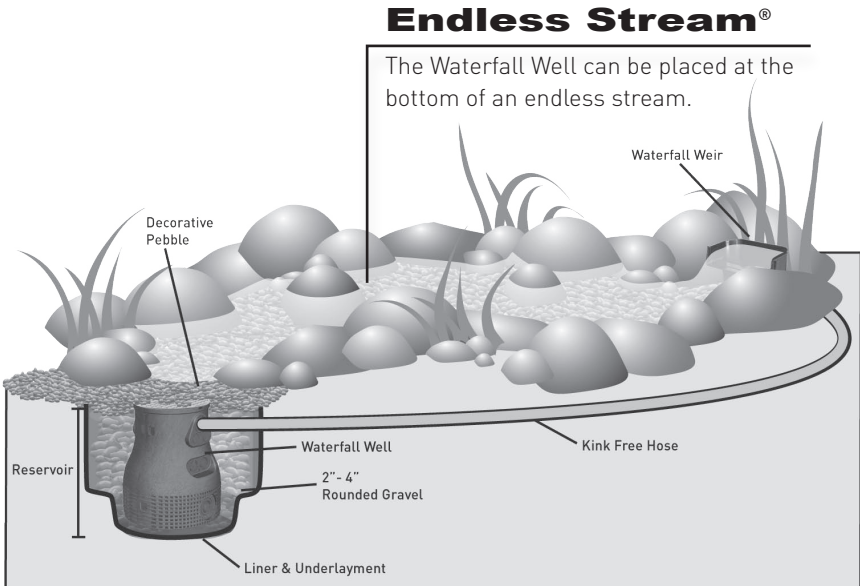
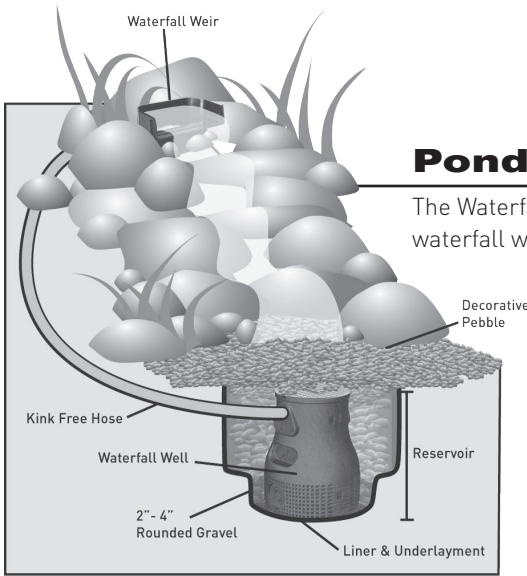


A) Continue to assemble the locking tabs from the bottom of the Waterfall Well to the top ensuring each tab is locked securely into place.

B) Once assembly of the housing is complete, place the lid onto the Waterfall Well.

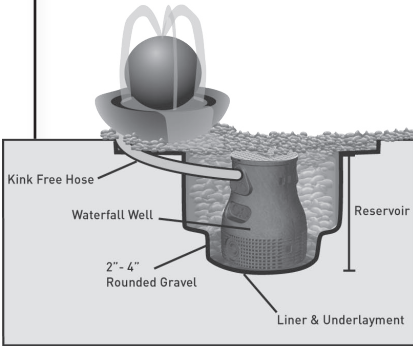
# Applications

The Waterfall Well can be used for a variety of applications.



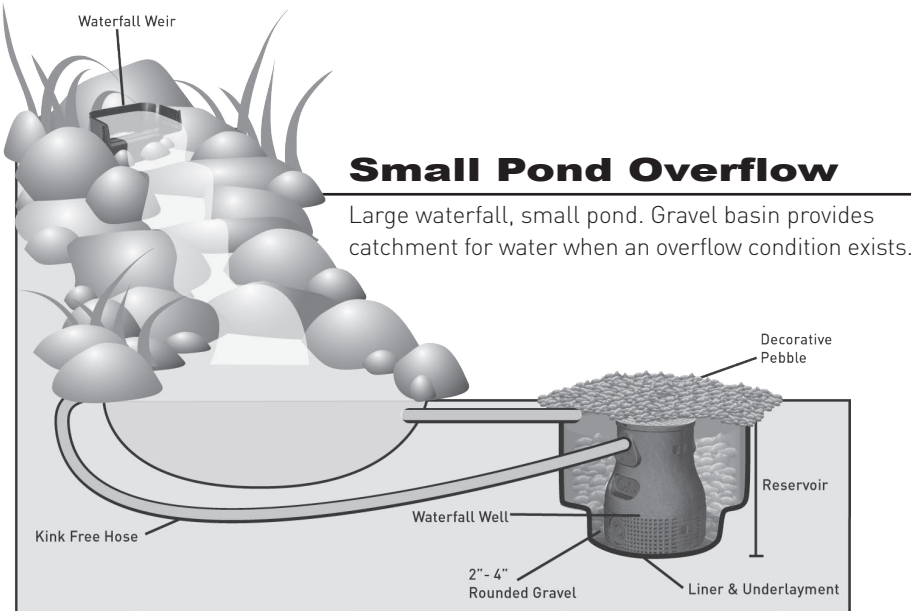
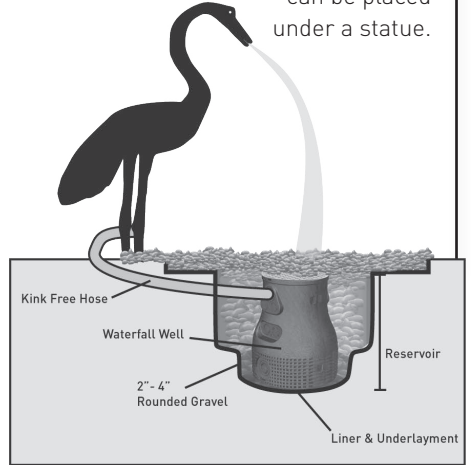
## Pond Free® Fountain

The Waterfall Well  
can be placed under  
a fountain.



## Pond Free® Statuary

The Waterfall Well  
can be placed  
under a statue.



## Small Pond Overflow

Large waterfall, small pond. Gravel basin provides catchment for water when an overflow condition exists.



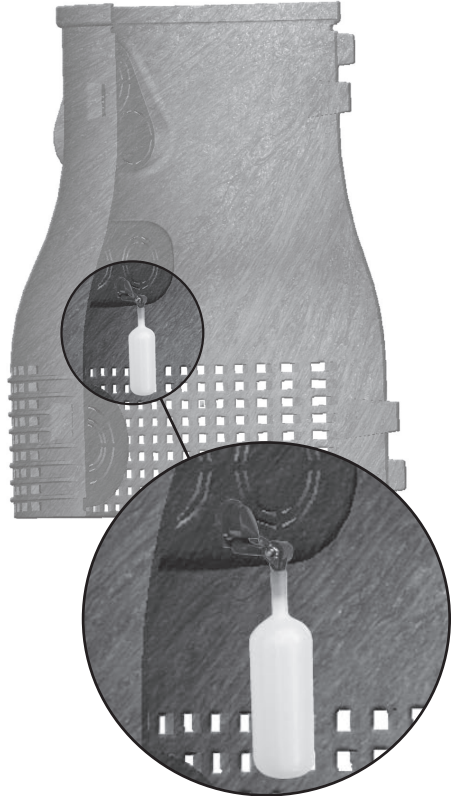
## 18" Extension

Create deeper reservoirs for larger water features  
(part #K6001)



## Auto-fill Valve

Maintains water level.  
Includes self-tapping valve  
and 25' of tubing.  
(part #K6002)



# Tips for Use

---

## Recommended Basin Depth

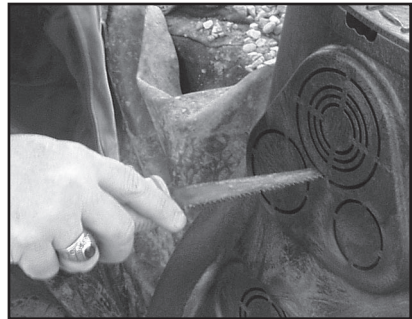
The Pond Free® Waterfall Well is designed for use in gravel filled water catchment basins 22" - 24" deep. Use optional **18" extensions** (sold separately) for deeper basins.

## Gravel Size

For optimum results fill the basin around the waterfall well by hand with round gravel or cobble 2" - 4" dia. to a depth of 8" To provide a finished appearance, place a layer of decorative stone or beach pebble 2"-3" deep over the top of the reservoir.

## Knock Outs

1. The Waterfall Well provides five easy-to-use knockouts on each side of the upper housing. These knock outs provide multiple possibilities for PVC, tubing and flexible hose connections. Choose the diameter and placement which best suits your application, then use a keyhole saw or matte knife to remove the knockout.



2. The knockouts located at the base of the housing can be used to connect perforated plastic PVC pipe for wide catchment basins and other drainage applications.

# Customer Service Information



**Savio Engineering, Inc.**

Albuquerque, New Mexico USA

<http://www.savio.cc> • email: [support@savio.cc](mailto:support@savio.cc)

## Warranty (Send in the enclosed warranty card)

SAVIO Engineering, Inc. provides a manufacturer's limited warranty of 5 years from original purchase date. Warranty is non-transferable. Within the warranty period SAVIO will repair materials with manufacturing deficiencies at their discretion. This warranty does not cover any faults caused by improper use, installation and handling of the device or as a result of wear and tear. SAVIO Engineering, Inc. does not assume liability for consequential damage caused by the failure of the SAVIO Waterfall Well.™ Warranty is void if the product is not used in accordance with instructions. For warranty claims, please contact your authorized dealer.

## Innovative, precision engineered solutions Advanced water gardening products for healthy, clean Livingponds.®



Skimmerfilters®



Livingponds® Filters



Pond Packages®



Uvinex™ system



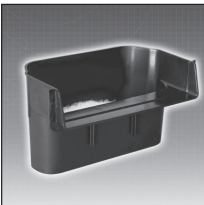
Water Master Pumps™



Waterfall Well™



Springflo Filter Media™



FilterWeirs™



Radiance™ Lighting



Black Foam



Pond Free® Packages